

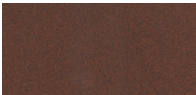
Sizes in cm



Materials:

Made from a single piece of shotblasted corten steel plate, silhouetted by oxy-fuel cutting.

Finishes:



Corten

*The colors shown are merely indicative and may differ from reality. (Other colors available to order)

**See special finishes for marine environments

Weight (kg):

20.

Installation and maintenance:

Surface fixation by means of two anchors, part of the same structure, sunk into holes previously drilled and filled with epoxy resin, quick-setting cement or similar.

Anchored using two bolts of the same piece.

Delivered assembled and packaged.

Instructions are included.

No functional maintenance is required.

(For further information log onto urbidermis.com)

Applicable standards: UNE-EN 13369, UNE-EN13198, UNE EN 771-3, UNE 7178, UNE 146507, EHE 08