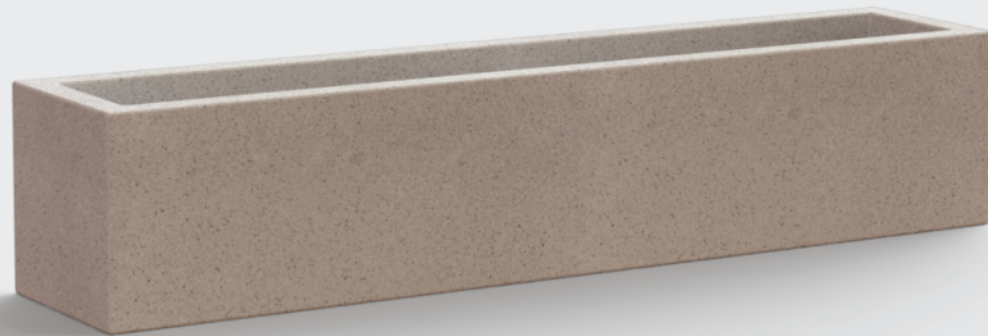


# Planter Roger CS



## Anchoring

- ✓ Free standing

## Measurements

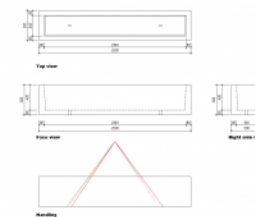
- ✓ 250x50x50

The Roger concrete planter The Roger concrete planter is a small and long planter. The Roger planter has a length of 205cm and a width of 50cm. This planter with a simple and timeless design is available in different colors and finishes. The Roger planter can be installed against a wall but can also be placed in the middle of a public space. Download the product file to get all...

## Colours and Finishings

- ✓ CS BLASTED
- ✓ CS POLISHED
- ✓ CS VELVET

## Handling



## Accessibility