

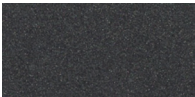
Sizes in cm



Materials:

Made from cast iron with antirust protection with paint finish.

Finish:



Oxiron

*The colors shown are merely indicative and may differ from reality. (Other colors available to order)

**See special finishes for marine environments

Weight (kg):

33.7.

Installation and maintenance:

Embedded fixation by means of anchor base part of the same structure, sunk 15 cm below the pavement, into a hole previously drilled and filled with epoxy resin, quick-setting cement or similar.

Delivered assembled and packaged.

Instructions are included.

No functional maintenance is required.

(For further information log onto urbidermis.com)

Applicable standards: UNE-EN 13369, UNE-EN13198, UNE EN 771-3, UNE 7178, UNE 146507, EHE 08.