

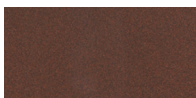
Sizes in cm



Materials:

Tetrahedron of Corten steel sheet and internal reflector on a polished AISI 304 stainless steel sheet, (also available in AISI 316 stainless steel). Polycarbonate translucent diffuser and stainless steel protection grid.

Finishes:



Corten

Mirror polished

*The colors shown are merely indicative and may differ from reality. (Other colors available to order)

**See special finishes for marine environments

Sizes (cm):

25 x 57 x 97

Weight (kg):

45

Installation:

Pavement fixation using a concrete cube, with groove for wiring, made on-site and four anchor bolts with antirust protection.

The element is delivered mounted.

Instructions, screws, template and anchor bolts are included.

(For further information log onto urbidermis.com)

Applicable standards: UNE-EN 60529, UNE-EN 60598, UNE-EN 55015, UNE-EN 61000, UNE-EN 50102, UNE-EN 62031.

Protections: IP66 (tightly protected against the penetration of dust and water jets), IK10 (protection against external mechanical impacts).

Electrical rating: Class I (CE)

Light source: High-efficiency optical unit with 3 LEDs.

Nominal lamp power (W):

3 LEDs: 35

System power (W):

3 LEDs: 38

Operating current (mA): 350

Colour temperature (K°): 3000 CRI min80

Power supply: constant current driver.

Regulation:

1-10V / DALI / Header flux regulation / Programmable automatic regulation.
 The LED luminaire may be regulated using a number of differing interfaces.
 These controls allow specific, individual control of light, reducing energy consumption in a sustainable manner.
 Constant light output (CLO)
 Assures a constant lumen output from the luminaire throughout its lifetime.

Power factor (cos φ):

LED n°	Current (mA)	P (W) 100%, CLO 80%
3	350	

Operating voltage: 220-240V 50-60Hz (CE)

Wire:

0,6/1 kV 3x2,5mm²
 0,6/1 kV 5x1,5mm² (prog.)

Temperature operating range Ta (°C): between -25 and 30 (450mA)

Lifetime: TM21 L70 (10k) > 60.000 h

Thanks to an optimised thermal design, the luminous flux is maintained up to 70% after 60.000 h.

Light distributions:

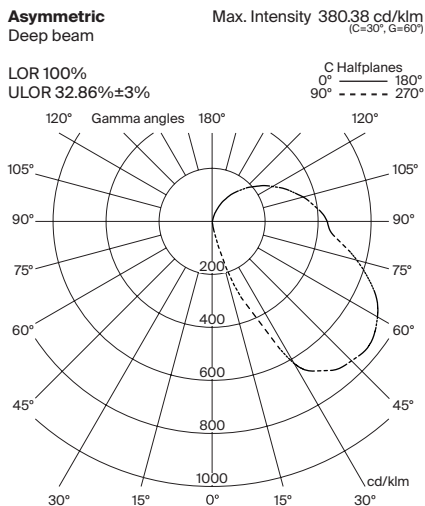
Asymmetric: Deep beam

Upper Light Output Ratio (FHS%): 0.60 - 0.88

Configurations

Deep beam

Reference	LED n°	T°color (K)	Current (mA)	Power lamp (W)	System power (W)	Luminous flux (lm)	Efficacy (lm/W)
ARB01LA	3	3000 CRI min 80	350	35	38		



*Recommendations: for calculation in ground type II (according to UNE-40) and wind speed of 29 m/s, with soil formed by loose or wet dirt or sand of medium compactness ($E_0 = 4800 \text{ KN/m}^2$), with HM-20 concrete. Non-binding information. We advise to carry out checks for each situation.