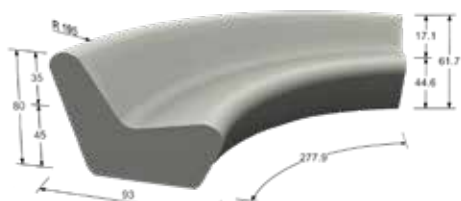


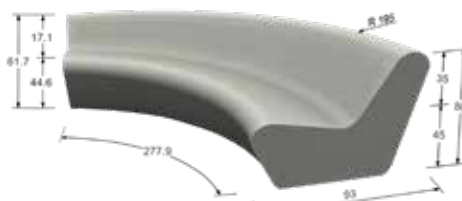
# 01. ELEMENTS AND DIMENSIONS

## IN & OUT ELEMENTS

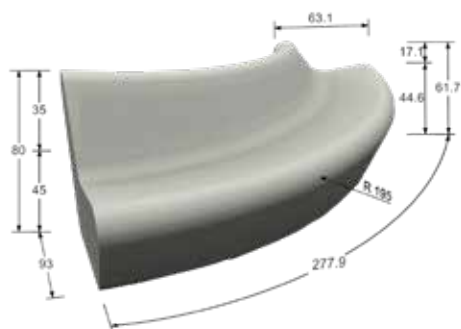
Below you will find the six elements of the In & Out bench. The original bench was made of four elements and we have developed two extra elements that gives you the possibility to create more combinations.



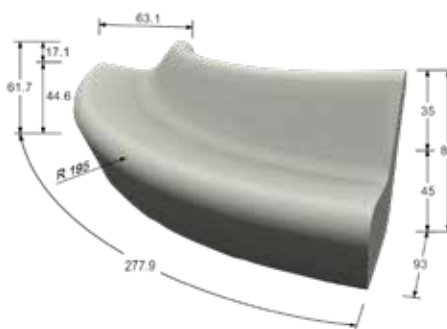
ZB.IO.01



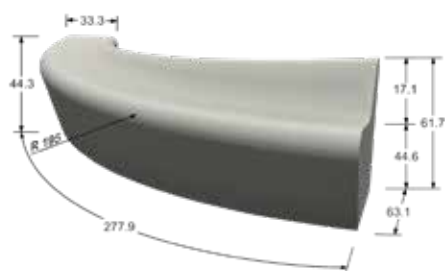
ZB.IO.02



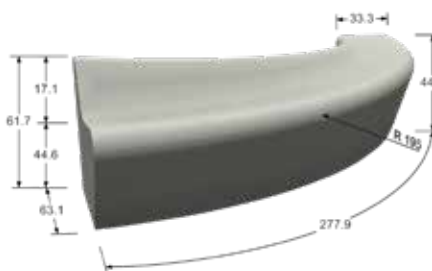
ZB.IO.03



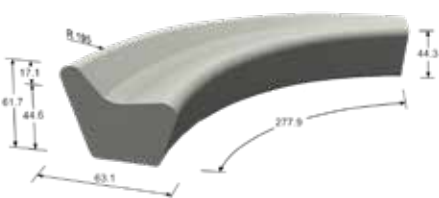
ZB.IO.04



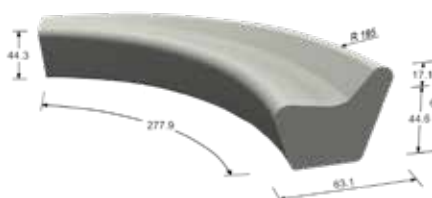
ZB.IO.05



ZB.IO.06



ZB.IO.07



ZB.IO.08



ZB.IO.09



ZB.IO.10

# 02. COMBINE AND CREATE

## EXAMPLES OF COMBINATIONS

When you combine the different elements you can create infinite combinations  
Below you can find some ideas of benches, tree grate - benches, circular benches, ....

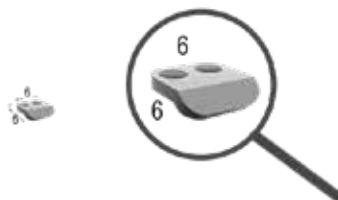


# 03. ACCESSOIRES

Use the anti-skate to prevent damage on the benches.



Z B . A C . 0 7



Z B . A C . 0 8

# 04. ACCESSIBILITY & HANDLING



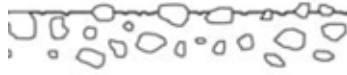
Perimeter is easily noticeable with white cane.  
Appropriate seat height with optional relaxing backrest. Easy to stand up thanks to back slope under seating.  
Volume is easily understandable and friendly for people with cognitive disabilities.



The elements are always handled with care using a crane during loading on the truck and during unloading on the building site.

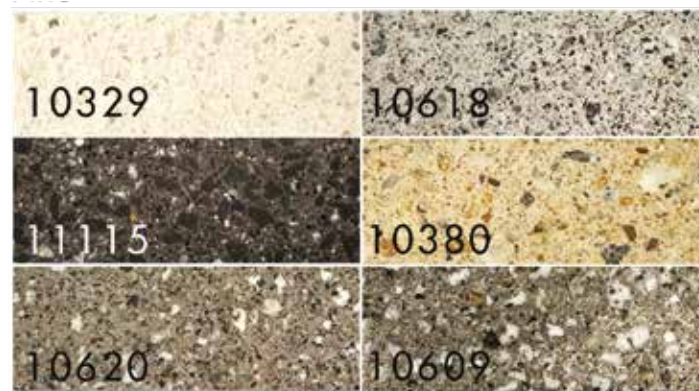
# 05. COLOURS AND FINISHINGS

## FERRO\*



The cement skin at the surface of concrete is removed, allowing aggregates to appear. This finishing provides also a light roughness to the aggregates.

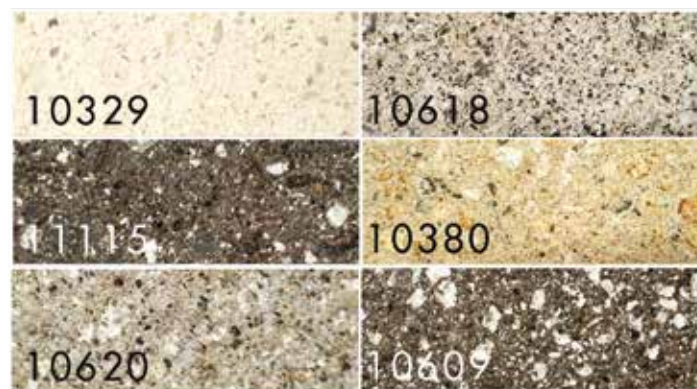
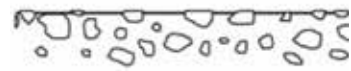
## FINO\*



The cement skin of the hardened concrete surface is removed by polishing with thinner and thinner grains. This allows the aggregates to show-up.

## FINERRO\*

permeabile



The cement skin of the concrete surface is removed in a special way allowing natural aggregates to appear and providing a satin aspect to the surface. It feels like velvet.

\*Indicative sample | Subject to colour and structure variations

# 06 DESIGN & PROJECTS

DESIGNER  
CREATION



The In & Out bench is a creation of Lucile Soufflet. Lucile Soufflet is one of the most talented Belgian designers of our time. She was born in 1975 and studied design at La Cambre in Brussels.

Her research is focused on individuals, relationships and the playful side of things.

From attentive observations of social behavior and the material elements use in our daily environment, she directs her work in a very personal way and creates remarkable creations.

A big part of her activities is dedicated to public spaces and furniture, such as the 'In and Out' bench that she designed for Urbastyle.

The In & Out bench is a circular bench. It is made of high resistance architectural concrete (HRAC). HRAC is a concrete that is resistant to a pressure of up to 70 MPa. The In and Out bench contains six different parts that you can combine to create a personalized bench. The choice in colour and finish also gives more space to your imagination.





ENGLAND: LONDON - KING'S COLLEGE RESIDENCE  
Tis is the In & Out bench in anthracite concrete